

# Sit-Stand



Price List  
2011

*"360 Degree Movement"*



Grahl's perching stools are Ideally suited to be used in conjunction with height adjustable sit-stand desking. Lightweight and easy to use these cleverly designed seats can also be applied to many other environments: Hot desks; breakout areas; canteens; counter worksurfaces and home offices to name a few.

The convex shape of the multi-plex base means that each stool will move and follow the body allowing full freedom of movement through 360°



SH1



SH2

---


### Prices and Warranties:-

All prices quoted within this price list are shown at UK List Price. All prices are in pounds sterling.

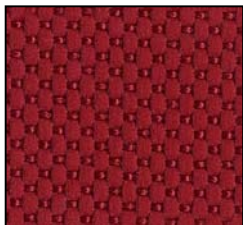
All Grahl chairs carry a minimum five year guarantee against faulty workmanship, subject to fair wear and tear. Longer warranty periods are available by negotiation.

All fabrics carry the relevant manufacturers' warranty, subject to fair wear and tear.

All chair orders are subject to a delivery charge. Delivery charges on volume orders are negotiable.

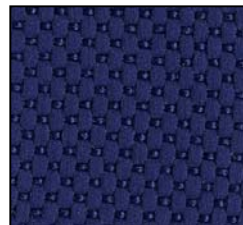
SH-1	List Price £		
	C.O.M	n/a	
	Fabric Group 20	n/a	
	Fabric Group 40	<b>£264.00</b>	
	Fabric Group 45	n/a	
	Fabric Group 48	n/a	
	Fabric Group 49	n/a	
	Fabric Group 50	n/a	
	Fabric Group 55	n/a	
	Standard Features		Standard Seat Measurements
	<ul style="list-style-type: none"> <li>▶ Seat Height Adjustment</li> <li>▶ Height Adjustable from any position</li> <li>▶ Circular upholstered Seat Cushion</li> <li>▶ Beech Veneered Multiplex contoured base</li> </ul>		Seat Height                      54-79cm

**Fabric Colour Options**



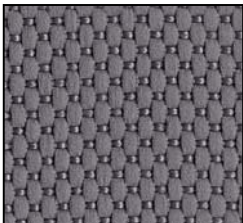
**40-30 ( Claret )**

Composition: 100% Polyester  
 Weight: Approx. 560g lfd/m  
 Abrasion Resistance:  
 ca. 50,000 Cycles-Martindale



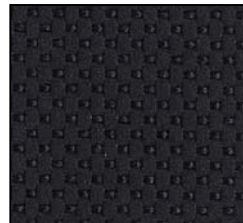
**40-04 ( Dark Blue )**

Composition: 100% Polyester  
 Weight: Approx. 560g lfd/m  
 Abrasion Resistance:  
 ca. 50,000 Cycles-Martindale




**40-73 ( Mid Grey )**

Composition: 100% Polyester  
 Weight: Approx. 560g lfd/m  
 Abrasion Resistance:  
 ca. 50,000 Cycles-Martindale

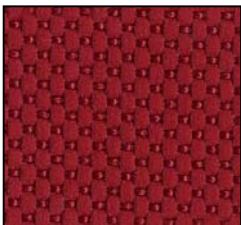


**40-88 ( Black )**

Composition: 100% Polyester  
 Weight: Approx. 560g lfd/m  
 Abrasion Resistance:  
 ca. 50,000 Cycles-Martindale

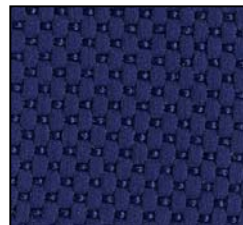
SH-2	List Price £		
	C.O.M	n/a	
	Fabric Group 20	n/a	
	Fabric Group 40	<b>£279.00</b>	
	Fabric Group 45	n/a	
	Fabric Group 48	n/a	
	Fabric Group 49	n/a	
	Fabric Group 50	n/a	
	Fabric Group 55	n/a	
	Standard Features		Standard Seat Measurements
	<ul style="list-style-type: none"> <li>▶ Seat Height Adjustment</li> <li>▶ Independent Seat Tilt</li> <li>▶ Circular upholstered Seat pad with a Beech Veneer outer seat shell</li> <li>▶ Integrated carrying handle</li> <li>▶ Beech Veneered Multiplex contoured base</li> </ul>		Seat Height                      56-83cm

**Fabric Colour Options**



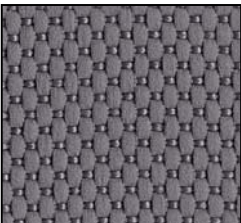
**40-30 ( Claret )**

Composition: 100% Polyester  
 Weight: Approx. 560g lfd/m  
 Abrasion Resistance:  
 ca. 50,000 Cycles-Martindale



**40-04 ( Dark Blue )**

Composition: 100% Polyester  
 Weight: Approx. 560g lfd/m  
 Abrasion Resistance:  
 ca. 50,000 Cycles-Martindale



**40-73 ( Mid Grey )**

Composition: 100% Polyester  
 Weight: Approx. 560g lfd/m  
 Abrasion Resistance:  
 ca. 50,000 Cycles-Martindale



**40-88 ( Black )**

Composition: 100% Polyester  
 Weight: Approx. 560g lfd/m  
 Abrasion Resistance:  
 ca. 50,000 Cycles-Martindale