
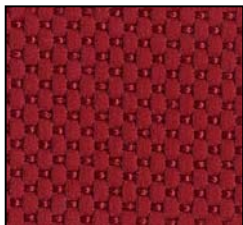


# Sit-Stand

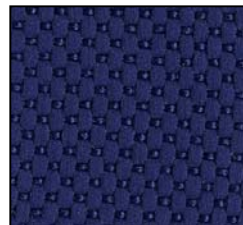
SH-1			
	<p>Rohde &amp; Grahl's perching stools are ideally suited to be used in conjunction with height adjustable sit-stand deskings.</p> <p>Lightweight and easy to use these cleverly designed seats can also be applied to many other environments: Hot desks; breakout areas; canteens; counter worksurfaces and home offices to name a few.</p> <p>The convex shape of the multi-plex base means that each stool will move and follow the body allowing full freedom of movement through 360°</p>		
	Standard Features	Standard Seat Measurements	
	<ul style="list-style-type: none"> <li>▶ Seat Height Adjustment</li> <li>▶ Height Adjustable from any position</li> <li>▶ Circular upholstered Seat Cushion</li> <li>▶ Beech Veneered Multiplex contoured base</li> </ul>	<table border="0"> <tr> <td style="padding-right: 20px;">Seat Height</td> <td>54-79cm</td> </tr> </table>	Seat Height
Seat Height	54-79cm		

## Fabric Colour Options



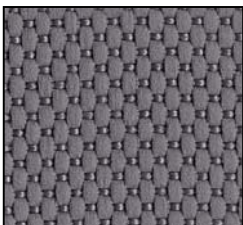
**40-30 ( Claret )**

Composition: 100% Polyester  
 Weight: Approx. 560g lfd/m  
 Abrasion Resistance:  
 ca. 50,000 Cycles-Martindale



**40-04 ( Dark Blue )**

Composition: 100% Polyester  
 Weight: Approx. 560g lfd/m  
 Abrasion Resistance:  
 ca. 50,000 Cycles-Martindale



**40-73 ( Mid Grey )**

Composition: 100% Polyester  
 Weight: Approx. 560g lfd/m  
 Abrasion Resistance:  
 ca. 50,000 Cycles-Martindale



**40-88 ( Black )**

Composition: 100% Polyester  
 Weight: Approx. 560g lfd/m  
 Abrasion Resistance:  
 ca. 50,000 Cycles-Martindale