
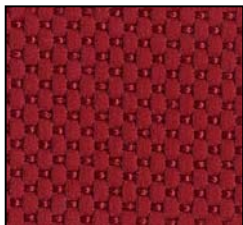


Sit-Stand

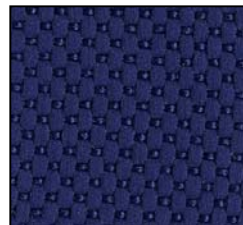
SH-2			
	<p>Rohde & Grahl's perching stools are ideally suited to be used in conjunction with height adjustable sit-stand deskings.</p> <p>Lightweight and easy to use these cleverly designed seats can also be applied to many other environments: Hot desks; breakout areas; canteens; counter worksurfaces and home offices to name a few.</p> <p>The convex shape of the multi-plex base means that each stool will move and follow the body allowing full freedom of movement through 360°</p>		
	Standard Features	Standard Seat Measurements	
	<ul style="list-style-type: none"> ▶ Seat Height Adjustment ▶ Independent Seat Tilt ▶ Circular upholstered Seat pad with a Beech Veneer outer seat shell ▶ Integrated carrying handle ▶ Beech Veneered Multiplex contoured base 	<table border="0"> <tr> <td style="padding-right: 20px;">Seat Height</td> <td>56-83cm</td> </tr> </table>	Seat Height
Seat Height	56-83cm		

Fabric Colour Options



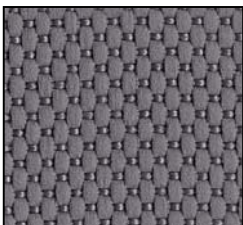
40-30 (Claret)

Composition: 100% Polyester
 Weight: Approx. 560g lfd/m
 Abrasion Resistance:
 ca. 50,000 Cycles-Martindale



40-04 (Dark Blue)

Composition: 100% Polyester
 Weight: Approx. 560g lfd/m
 Abrasion Resistance:
 ca. 50,000 Cycles-Martindale



40-73 (Mid Grey)

Composition: 100% Polyester
 Weight: Approx. 560g lfd/m
 Abrasion Resistance:
 ca. 50,000 Cycles-Martindale



40-88 (Black)

Composition: 100% Polyester
 Weight: Approx. 560g lfd/m
 Abrasion Resistance:
 ca. 50,000 Cycles-Martindale